

Case Preparatory Academy is a public charter school serving K-8 students in Akron and Summit County. The school's close-knit culture and STEM-focused curriculum prepares students for academic and life success.

In addition to core subjects, students participate in Art, PE, Music, and Technology classes during the school day. The safe and secure campus features large classrooms as well as a playground, gym, and library. Students and families benefit from free meals, transportation, and tutoring services.

MISSION STATEMENT

To provide all students with a content-rich, academically challenging education with a well-defined, sequential curriculum in a safe, orderly, disciplined environment. Case Preparatory Academy students will learn to express themselves and utilize 21st century computer technology to support learning in all major subjects.



GRADES SERVED

Early K - 8

AVERAGE DAILY ENROLLMENT
258

PRINCIPAL

James Burns

EXECUTIVE PRINCIPAL

Ashley Miles

REGIONAL VICE PRESIDENT

Heather Stevens

SCHOOL YEAR OPENED

2020-21

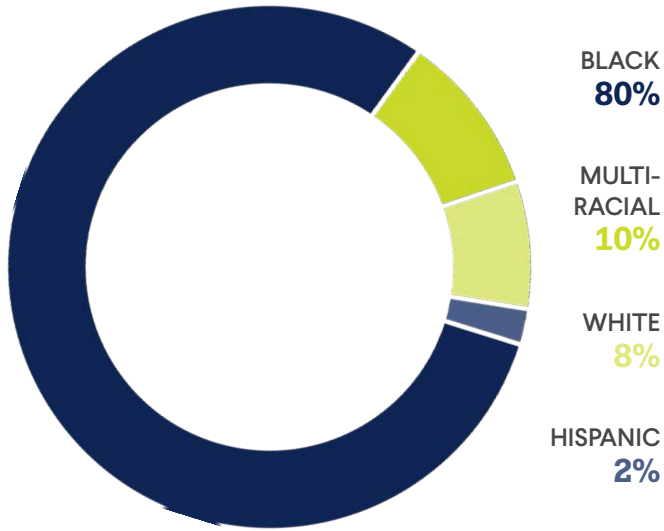
AUTHORIZER

**Richland Academy
of the Arts**

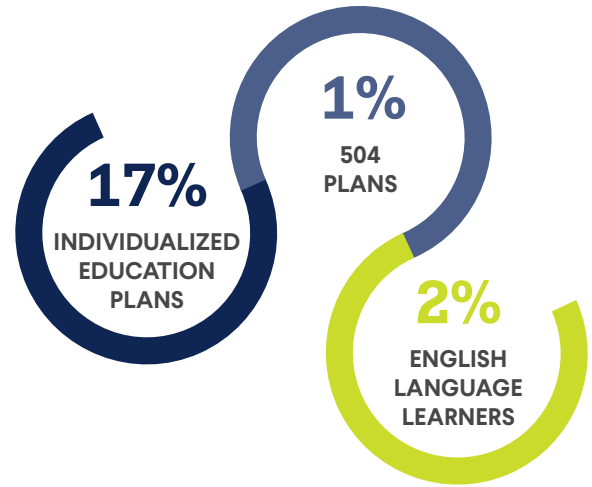


2021-22
ANNUAL REPORT

STUDENT DEMOGRAPHICS



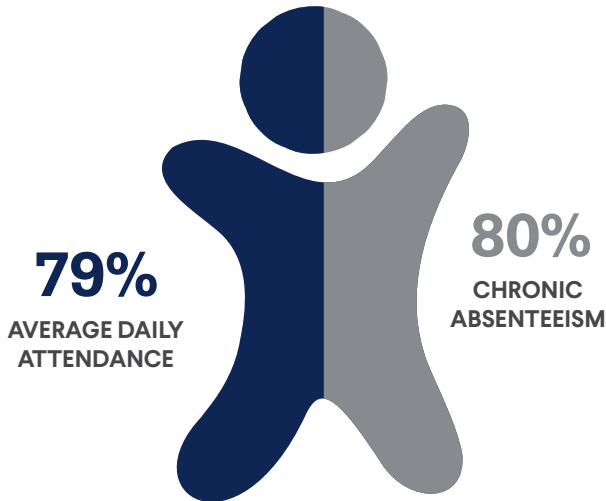
SPECIAL POPULATIONS



97% ECONOMICALLY DISADVANTAGED

26% STUDENT MOBILITY RATE

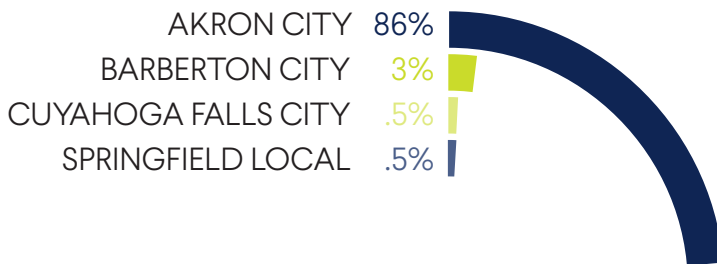
3% UNHOUSED



HIGHLIGHTS

- Rated 3 stars in Progress for meeting state expectations in student academic growth
- 100% of third graders met the state reading requirements for promotion to Grade 4
- Campus improvements: New interior paint, water stations & updated landscaping
- New Program (or Special Program Implementation):
 - Summer School program was well attended with 55 students participating
 - PBIS program has been fully implemented
 - RTI program has been fully implemented
- Provided 1005.71 instructional hours, 9% more than the Ohio requirement for charter schools
- Achieved budget surplus in Fiscal Year 2022
- Full day Kindergarten & Early K program for students turning five years old before Jan. 1
- STEM-focused curriculum with instruction in Art, PE, Music & Technology beginning in Kindergarten
- Close-knit, positive school culture
- Safe, secure campus featuring large classrooms, playground, gym & library
- Free breakfast, lunch, afterschool tutoring, health & on-site counseling services
- Accredited by Cognia™

DISTRICTS OF RESIDENCE



INSTRUCTIONAL & SUPPORT STAFF



STATE REPORT CARD

| | |
|--|--|
| PERFORMANCE INDEX SCORE 42.7 | ACHIEVEMENT COMPONENT ★ |
| PROGRESS COMPONENT ★★★ | THIRD GRADE READING GUARANTEE <hr/> |
| | PROFICIENCY 13.2% |
| | PROMOTION TO GRADE 4 100% |

ACADEMIC PROGRESS

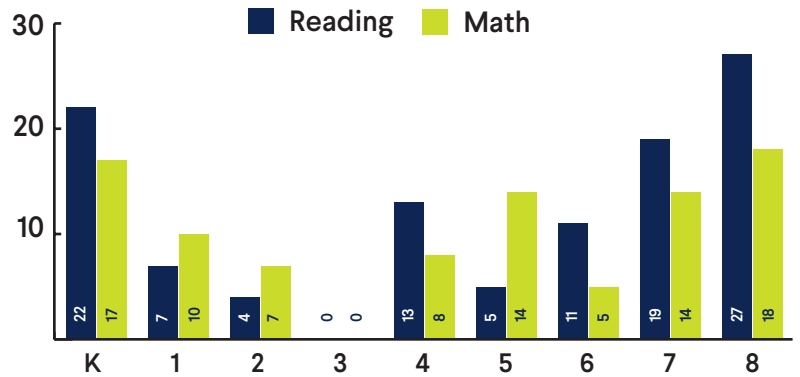
Case Preparatory Academy made exceptional academic progress in 2021-22. The school increased its Performance Index (PI) score by over 20% and met state expectations for student academic growth (3 Stars, Progress). Additionally, 100% of third graders met the state reading requirements for promotion to Grade 4.

YOY GROWTH IN PERFORMANCE INDEX SCORE



AVERAGE ANNUAL GROWTH IN READING & MATH

i-Ready Assessment, Fall 2021 to Spring 2022





AMY ALLEN
SCHOOL BOARD CHAIRWOMAN

CHARL BOSMAN
VICE CHAIRMAN

AMANDA FILIPPI
SECRETARY

DIANA ROSA
TREASURER

KEVIN COOK
BOARD MEMBER



AUTHORIZED BY

As required by state law, Richland Academy of the Arts (RAA) provides oversight, monitoring and technical assistance to the schools it sponsors including evaluating the academic, fiscal and organizational performance in various ways. In addition to assessing academic performance as measured by state report card metrics, RAA reviews various academic progress and financial reports, attends board meetings, assesses compliance with state and federal rules and laws, and conducts school site visits.

State law also requires RAA to submit written reports on the evaluation of school academic, financial and organizational performance, and legal compliance, to the Ohio Department of Education annually by November 30. The report is also available for review by parents and other stakeholders on and after that date on RAA's website: www.richlandacademy.com.



FINANCIAL DATA

| | |
|-----------------------|--------------------|
| State Sources | 2,724,587 |
| Federal Sources | 932,546 |
| Local Sources | N/A |
| TOTAL REVENUES | \$3,657,133 |

| | |
|-----------------------|--------------------|
| Salaries & Wages | 922,389 |
| Employee Benefits | 297,642 |
| Purchased Services | 1,663,259 |
| Supplies & Materials | 42,939 |
| Capital Outlay | 14,900 |
| Other Expenses | 5,441 |
| TOTAL EXPENSES | \$2,946,570 |

At time of publication, 2022 fiscal year data was not available from the Ohio Auditor of State. For updated information visit: www.auditor.state.oh.us

