

Case Preparatory Academy is a public charter school serving EK-8 students in Akron neighborhoods and Summit County. The school's close-knit culture and STEM-focused curriculum prepares students for academic and life success.

In addition to core subjects, students participate in Art, PE, Music, and Technology classes during the school day. The safe and secure campus features large classrooms as well as a playground, gym, and library. Students and families benefit from free meals, transportation, and tutoring services.

MISSION STATEMENT

To provide all students with a content-rich, academically challenging education with a well-defined, sequential curriculum in a safe, orderly, disciplined environment. Case Preparatory Academy students will learn to express themselves and utilize 21st century computer technology to support learning in all major subjects.



GRADES SERVED

Early K - 8

PRINCIPAL

James Burns

EXECUTIVE PRINCIPAL

Ashley Miles

REGIONAL VICE PRESIDENT

Heather Stevens

SCHOOL YEAR OPENED

2020-21

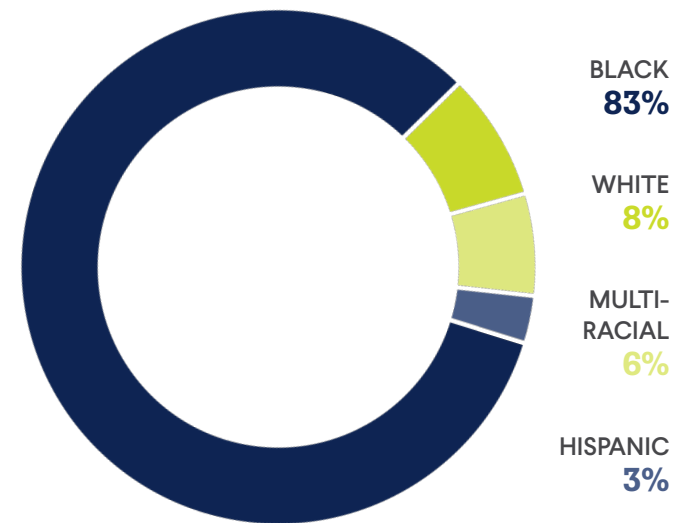
AUTHORIZER

**Richland Academy
of the Arts**



2022-23
ANNUAL REPORT

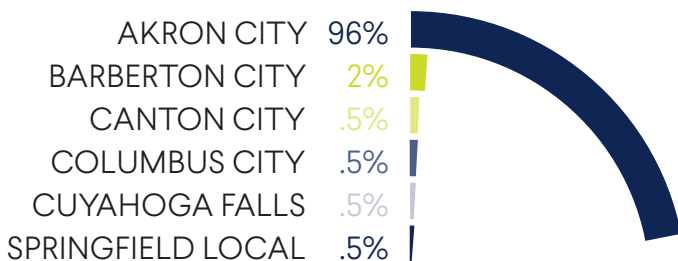
STUDENT DEMOGRAPHICS



258
AVERAGE DAILY
ENROLLMENT

84%
AVERAGE DAILY
ATTENDANCE

DISTRICTS OF RESIDENCE

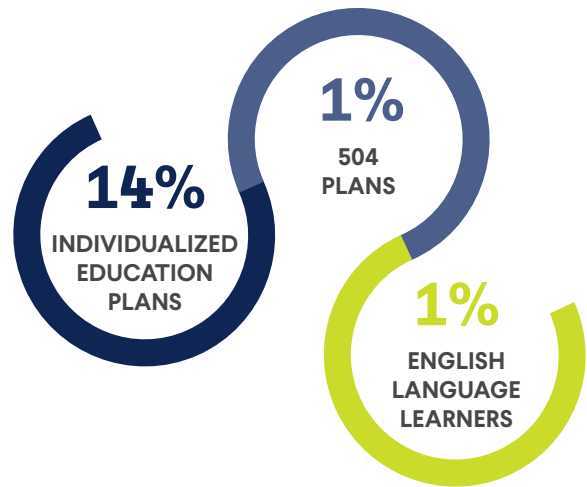


INSTRUCTIONAL & SUPPORT STAFF

AVERAGE CLASS SIZE 26

STAFF TO STUDENT RATIO 10:1

SPECIAL POPULATIONS



100% ECONOMICALLY DISADVANTAGED

17% STUDENT MOBILITY RATE

9% UNHOUSED

HIGHLIGHTS

- Increased Performance by 9.37%
- Rated 3 stars overall for meeting state expectations
- Rated 4 stars in Progress for exceeding state expectations in student academic growth
- Rated 3 stars in Gap Closing for meeting state expectations in closing educational gaps
- Received Outstanding Student Progress award from ACCEL Schools
- Provided 1133 instructional hours, 23% more than the Ohio requirement for charter schools
- Improved campus with new gym equipment & interior paint
- Expanded extracurricular offerings to include Basketball
- Hosted a new summer school program emphasizing STEM with over 50 participants from Grades 2-8
- Started a new afterschool tutoring program with 60% student participation
- Retained 90% of faculty & staff
- Recognized by authorizer for meeting expectations in the area of Finance

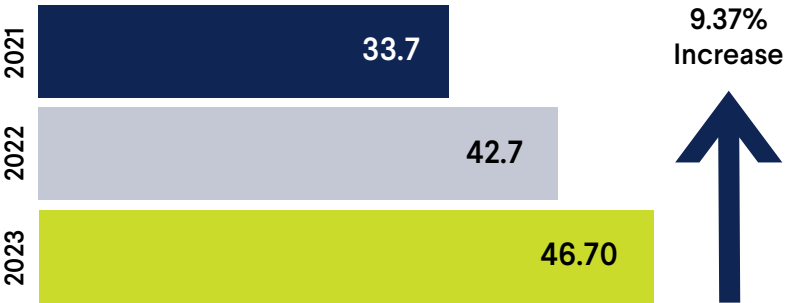
STATE REPORT CARD

| | |
|---------------------------------|-------------------------------|
| PERFORMANCE INDEX SCORE 46.7 | OVERALL RATING ★★★ |
| ACHIEVEMENT COMPONENT ★ | PROGRESS COMPONENT ★★★★★ |
| GAP CLOSING COMPONENT ★★★★ | EARLY LITERACY COMPONENT ★ |

ACADEMIC PROGRESS

Case Preparatory Academy made exceptional academic progress in 2022-23. The school increased its Performance Index (PI) score by close to 10% and exceeded state expectations for student academic growth (4 Stars, Progress).

YOY GROWTH IN PERFORMANCE INDEX SCORE



PROGRESS COMPONENT RATINGS BY SUBJECT & GRADE LEVEL

| | ELA | Math | Science |
|-----------|-----|------|---------|
| 4th Grade | | | |
| 5th Grade | | | |
| 6th Grade | | | |
| 7th Grade | | | |
| 8th Grade | | | |

- Students significantly exceeded state expectations in academic growth
- Students met state expectations in academic growth
- Students made less academic growth than state expected
- Value Added data is not available





AMY ALLEN
SCHOOL BOARD CHAIRWOMAN

CHARL BOSMAN
VICE CHAIRMAN

DIANA ROSA
TREASURER

KEVIN COOK
BOARD MEMBER

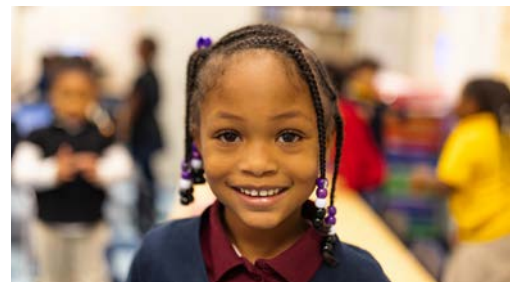
GREG WHEELER
BOARD MEMBER



AUTHORIZED BY

As required by state law, Richland Academy of the Arts (RAA) provides oversight, monitoring and technical assistance to the schools it sponsors including evaluating the academic, fiscal and organizational performance in various ways. In addition to assessing academic performance as measured by state report card metrics, RAA reviews various academic progress and financial reports, attends board meetings, assesses compliance with state and federal rules and laws, and conducts school site visits.

State law also requires RAA to submit written reports on the evaluation of school academic, financial and organizational performance, and legal compliance, to the Ohio Department of Education annually by November 30. The report is also available for review by parents and other stakeholders on and after that date on RAA's website: www.richlandacademy.com.



FINANCIAL DATA

| | |
|-----------------------|--------------------|
| State Sources | 2,722,104 |
| Federal Sources | 1,055,650 |
| Local Sources | 0 |
| TOTAL REVENUES | \$3,777,754 |

| | |
|-----------------------|--------------------|
| Salaries & Wages | 1,066,951 |
| Employee Benefits | 349,684 |
| Purchased Services | 1,879,674 |
| Supplies & Materials | 98,762 |
| Capital Outlay | 14,704 |
| Other Expenses | 5,940 |
| TOTAL EXPENSES | \$3,415,715 |

At time of publication, 2023 fiscal year data was not available from the Ohio Auditor of State. For updated information visit:
www.auditor.state.oh.us

